



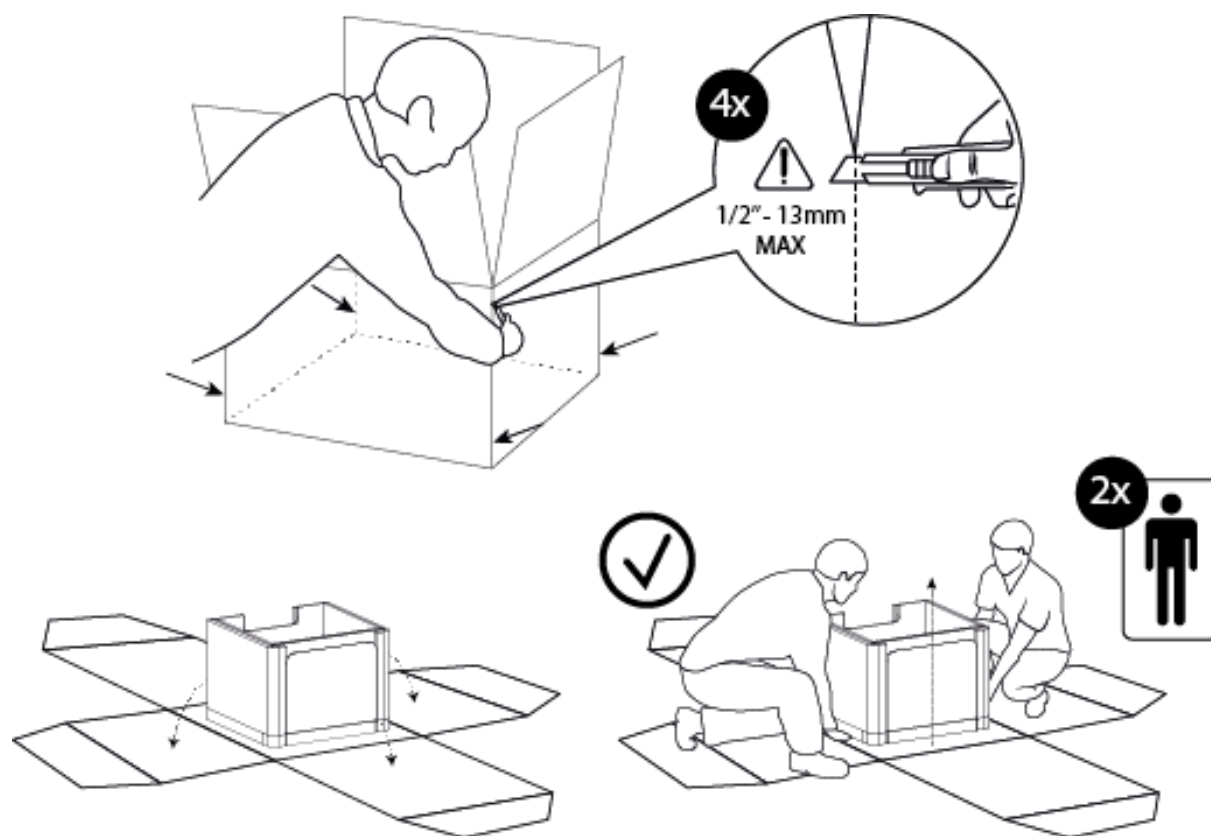
Installation Guide

Rayado collection

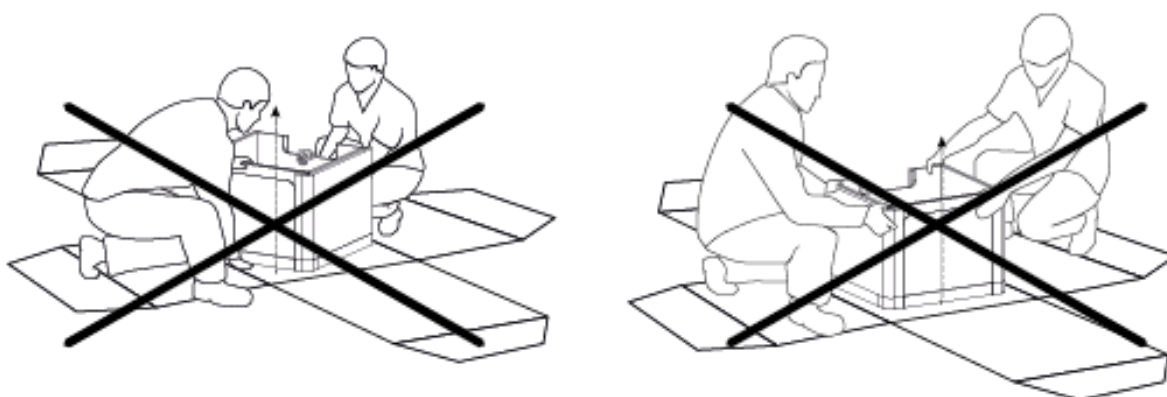


Caution – Important

Two people are needed to handle and install vanity does not lift vanity from the top. Lift vanity from the bottom only.



LIFT FROM EACH SIDE, NOT THE FRONT OR BACK





RAYADO COLLECTION INSTALLATION GUIDE

INDEX

Before you begin	p.2
Installation	
• Wall preparation	p.4
• Plumbing	p.5
• Drawer removal	p.5
• Vanity installation	p.6
• Lavatory installation	p.10
• Vanity drawer adjustment	p.11
• Cleaning guide	p.13
• Warranty	p.13

BEFORE YOU BEGIN

Thank you for choosing from WETSTYLE's line of quality products. Before leaving the manufacturer, the furniture went through our quality control and was in perfect condition.

We recommend that you carefully inspect the furniture prior to installation. If there is any defect, contact your dealer and do not install the furniture. WETSTYLE will not be responsible for any defect once the furniture is installed.

We highly recommend using the services of a professional installer. Read this guide carefully to assure your furniture's proper installation and reliability for many years to come.

For assistance, please call our technical support at 1 866-842-1367.

!

WARNING! To reduce the risk injury to persons, please read these instructions thoroughly before using this product.

Important Safety Instructions must be kept for future use.

TOOLS AND EQUIPMENT



!

IMPORTANT: This installation might require custom placement of studs relative to the position of the product in the room. Please, read the instructions related to your vanity model carefully.

WALL PREPARATION

The Rayado collection is designed to be wall-mounted and needs special wall preparation for the vanity.

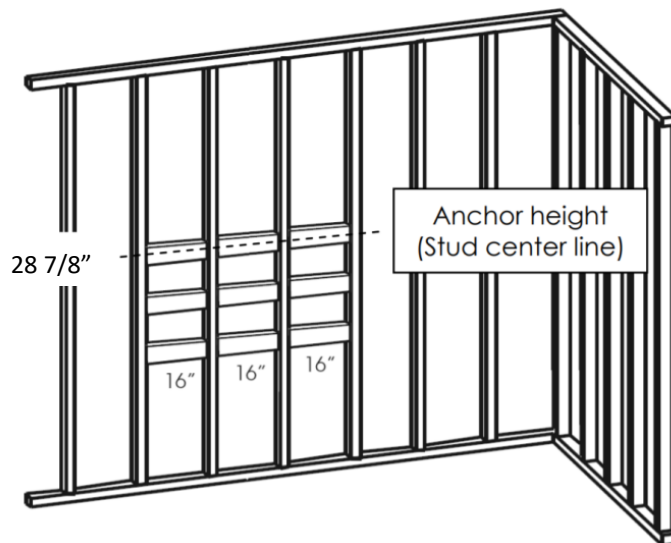
1. Make sure that walls and floor are straight and level.
2. Determine overall vanity dimensions.
3. Determine the desired location of the vanity. See diagram #1.
4. The distance between studs should not be more than 16".
5. Metal studs should be reinforced vertically by 2" x 4" wooden studs.
6. Metal and wooden studs should be reinforced horizontally with 2" x 6" wooden studs at a height of 30" along the full width of the vanity
7. Do not apply the wall surface until all braces have been installed and all plumbing and electrical roughens have been completed.

1

Vanity: 32 1/8" from floor
(Floor mounted)

Z-clip height: 28 7/8"

Z-clip anchor height: 27 1/8"
(Stud center line)



PLUMBING

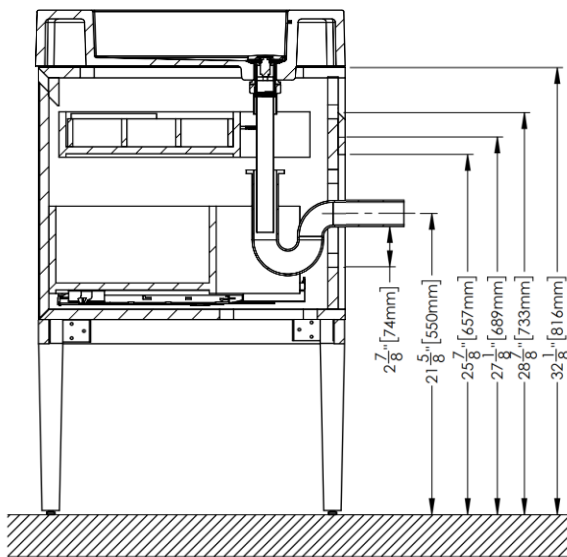
The pipes should be positioned at an approximate height of 21" or within the connection area depicted bellow. For the vanity's, the pipes are inside the furniture. Use your preferred pipe trap.

!

Important: Please be advised that the RAYADO COLLECTION was designed to receive WETSTYLE CUBE AND DECO sinks as noted in the WETSTYLE price list and catalogue. The manufacturer does not take responsibility for the use of third party sink or countertop in conjunction with the RAYADO vanity.

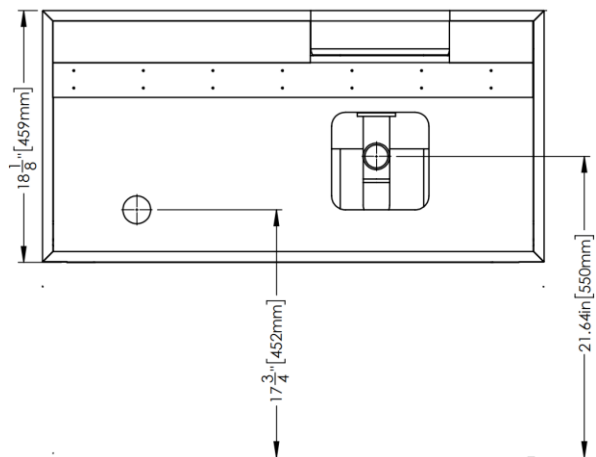
Wall-mounted vanity legs
Back view

2



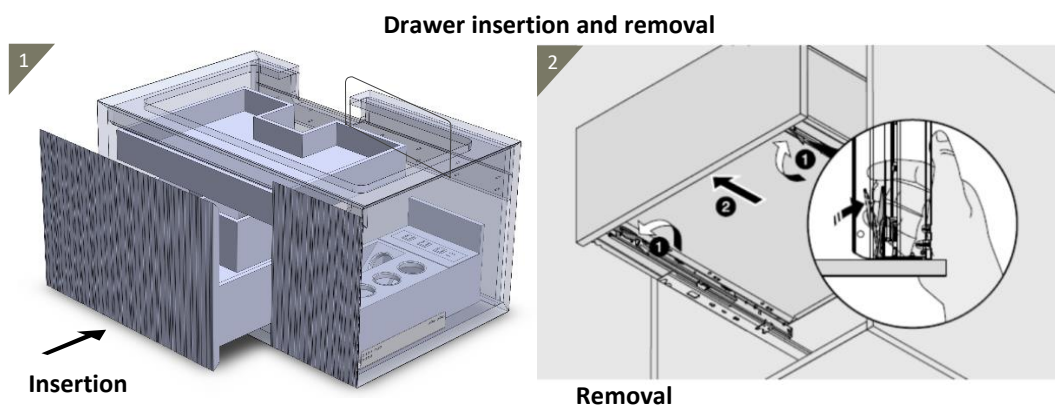
Wall-mounted vanity
Back view

2



DRAWER REMOVAL

1. Remove Vanity drawers and cover glides with masking tape to protect them from dust.

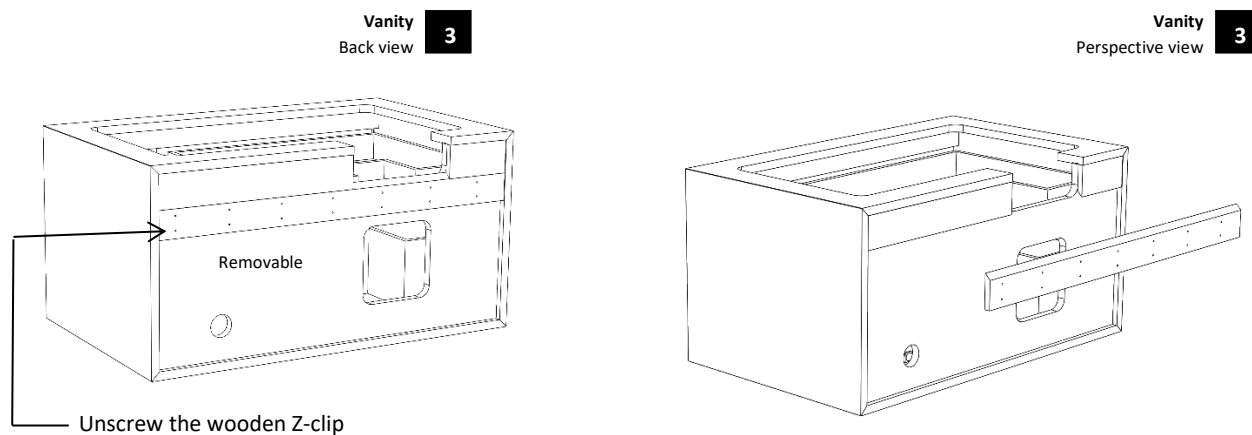


Important: All RAYADO VANITIES must be securely wall-mounted with the custom Z-clips provided with the furniture.

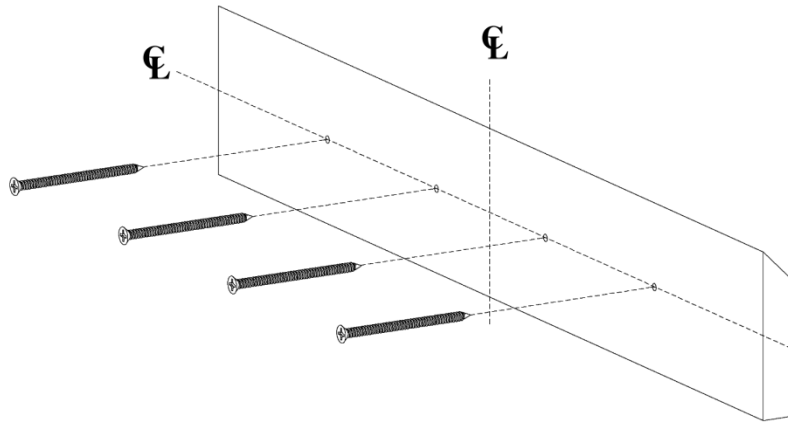
VANITY INSTALLATION

A-Wall Mounted Vanity

1. Unscrew the WOODEN Z-Clip that is temporarily attached to the vanity. See diagram #3.

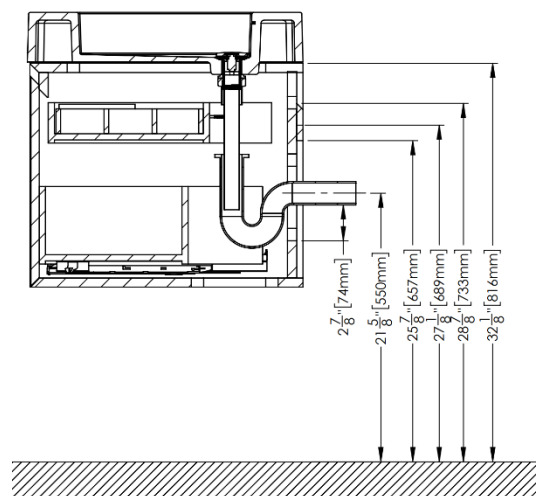
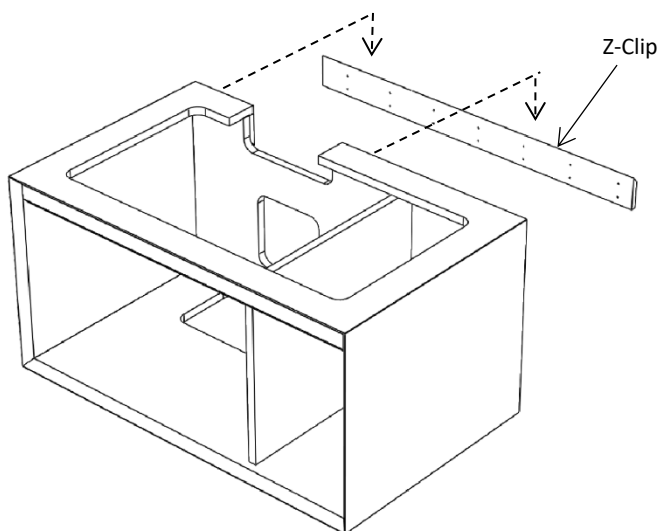


- Pre-drill pilot holes into the WOODEN Z-CLIP to accommodate 3" long #10 wooden screws. Then, firmly screw the WOODEN Z-CLIP to the wall. Make sure the WOODEN Z-CLIP is level.



- Position temporarily the Vanity onto Z-clip.

Wall-mounted vanity
Perspective view

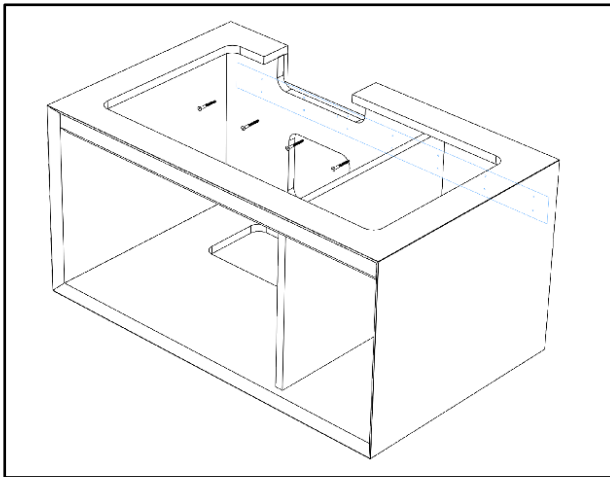


Wall-mounted vanity
Side view

- In addition to the wooden Z Clip system, the wall-mounted vanity must be attached to the back wall. Pre-drill pilot holes to accommodate 4" long #10 Wood screws. From inside the vanity, screw the unit every 3" to the back wall.

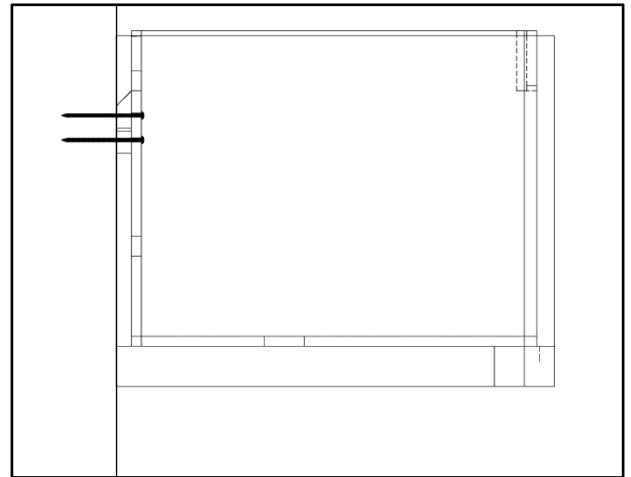
Wall-mounted vanity
Perspective view

5



Wall-mounted vanity
Side view

5

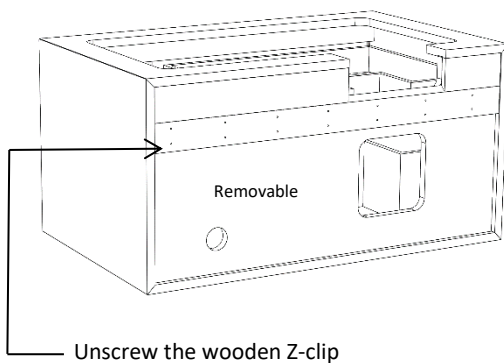


B-Wall Mounted Vanity Legs

- Unscrew the WOODEN Z-Clip that is temporarily attached to the vanity. See diagram #3.

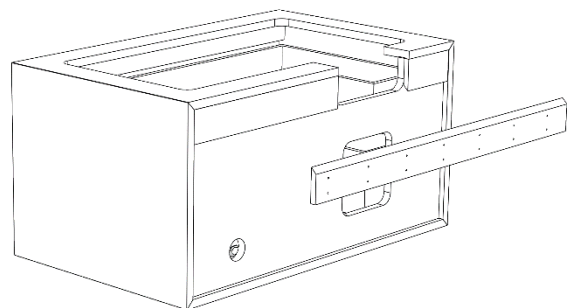
Vanity
Back view

6

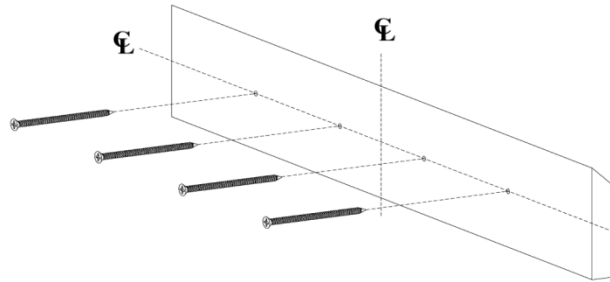


Vanity
Perspective view

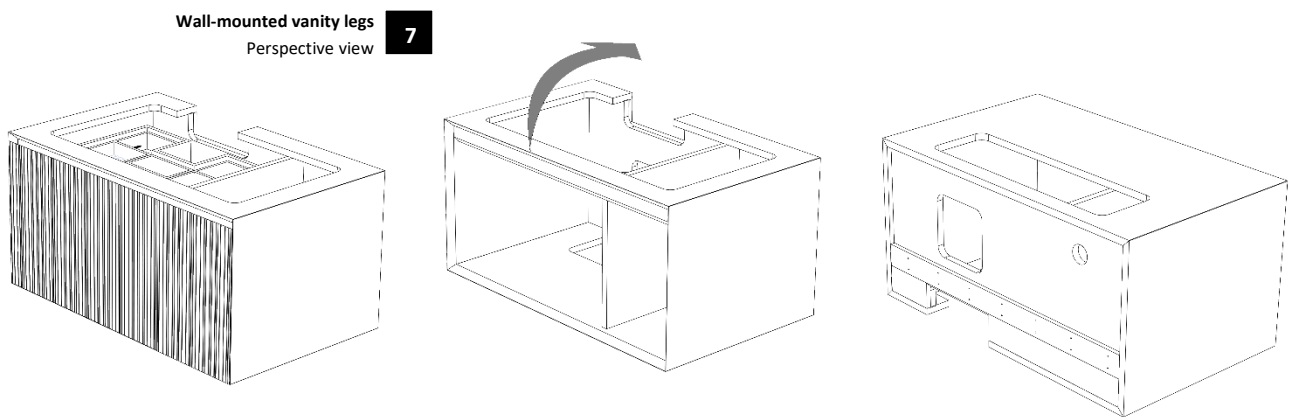
6



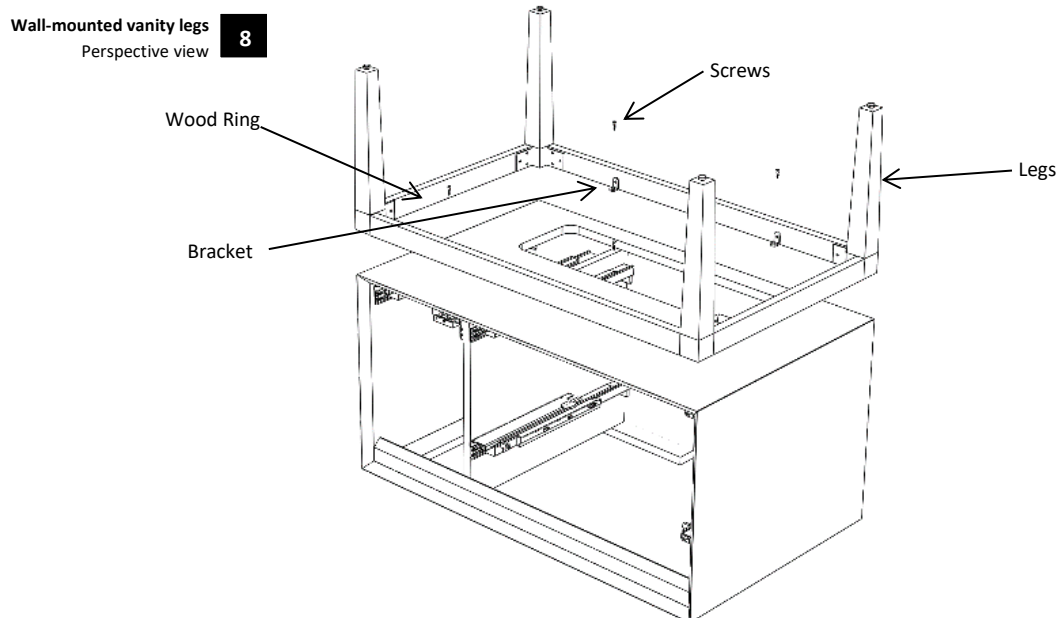
2. Pre-drill pilot holes into the WOODEN Z-CLIP to accommodate 3" long #10 wooden screws. Then, firmly screw the WOODEN Z-CLIP to the wall. Make sure the WOODEN Z-CLIP is level.



3. Gently turn vanity on its back for Leg assembly.

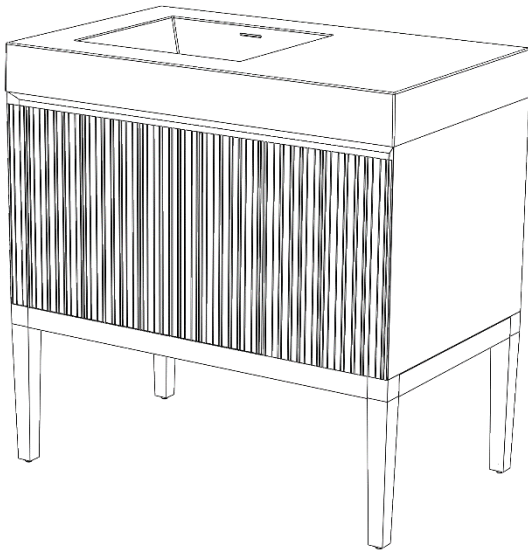


4. Fasten and secure legs tightly with the supplied wood screws.

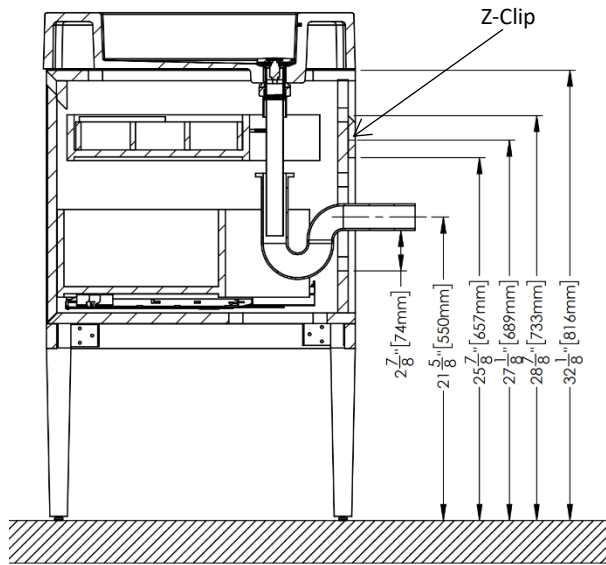


5. Gently turn the vanity onto its feet by handling with care.
6. Position temporarily the Vanity onto Z-clip.

Wall-mounted vanity legs **9**
Perspective view

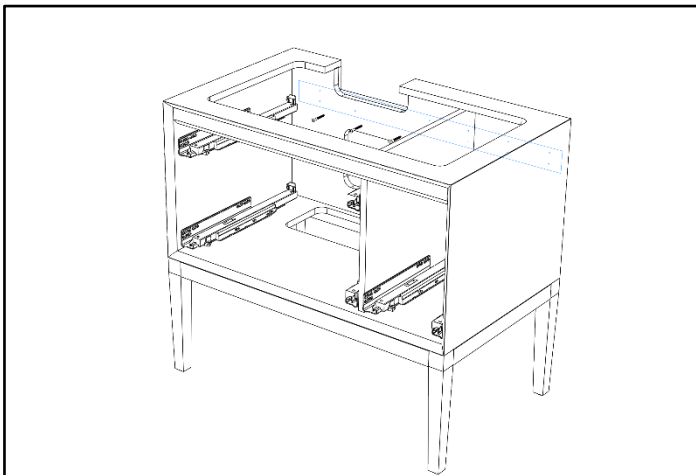


Wall-mounted vanity legs **9**
Side view

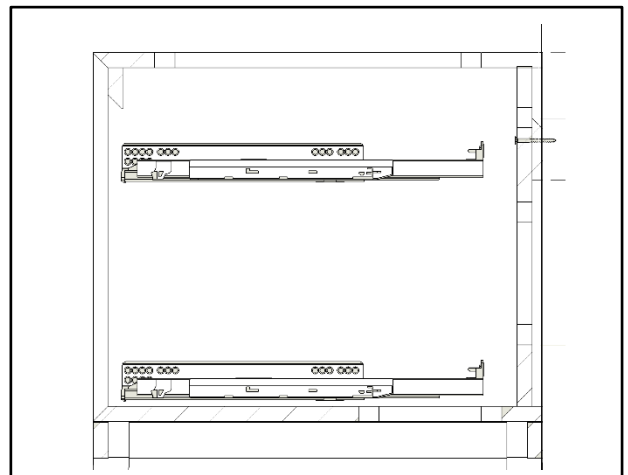


7. In addition to the wooden Z Clip system, the wall-mounted vanity must be attached to the back wall. Pre-drill pilot holes to accommodate 4" long #10 Wood screws. From inside the vanity, screw the unit every 3" to the back wall.

Wall-mounted vanity legs **10**
Perspective view

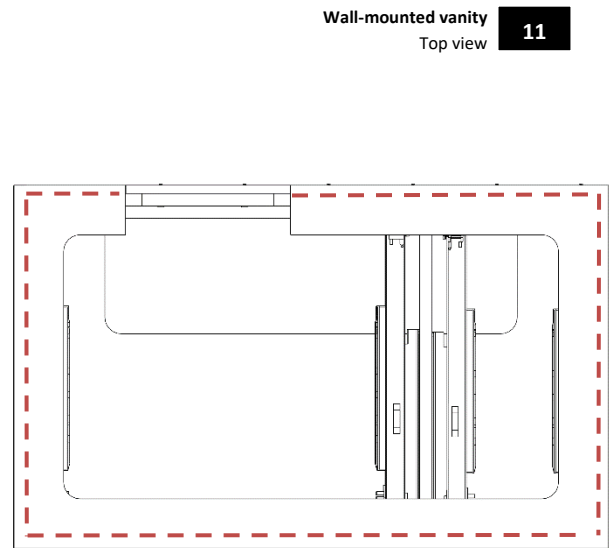
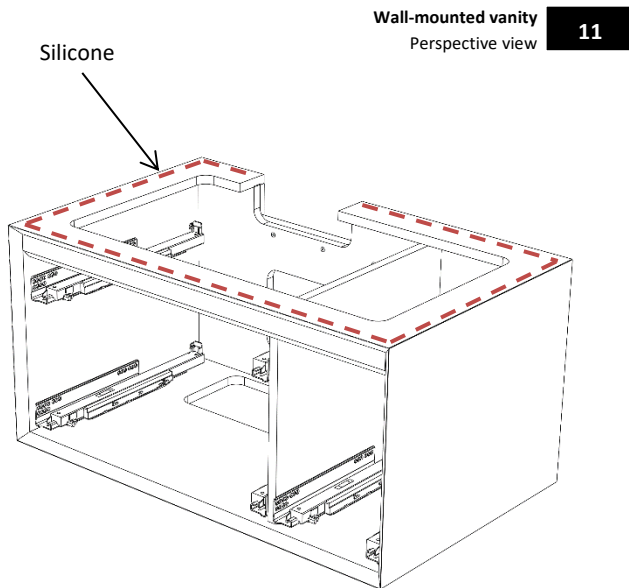


Wall-mounted vanity legs **10**
Side view

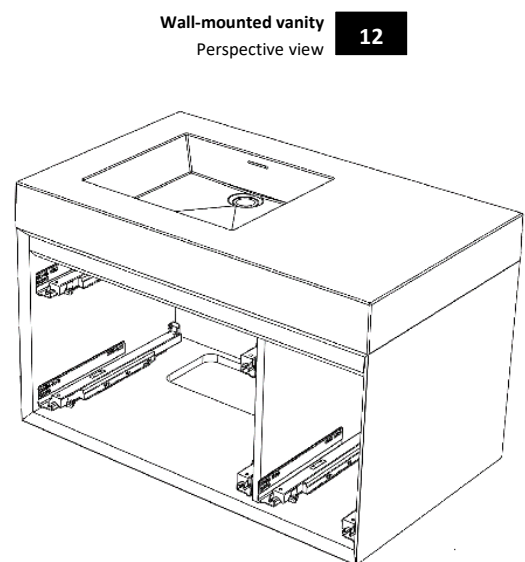
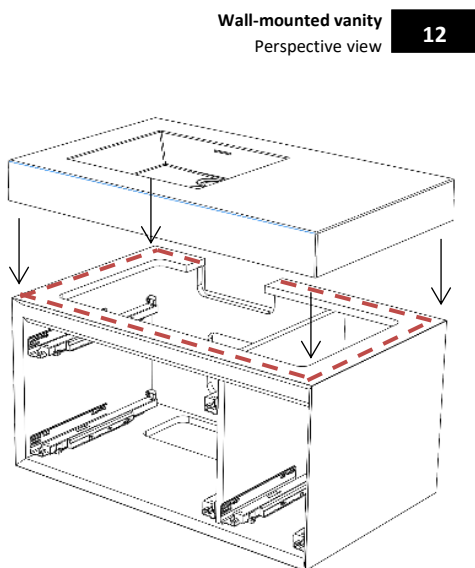


LAVATORY INSTALLATION

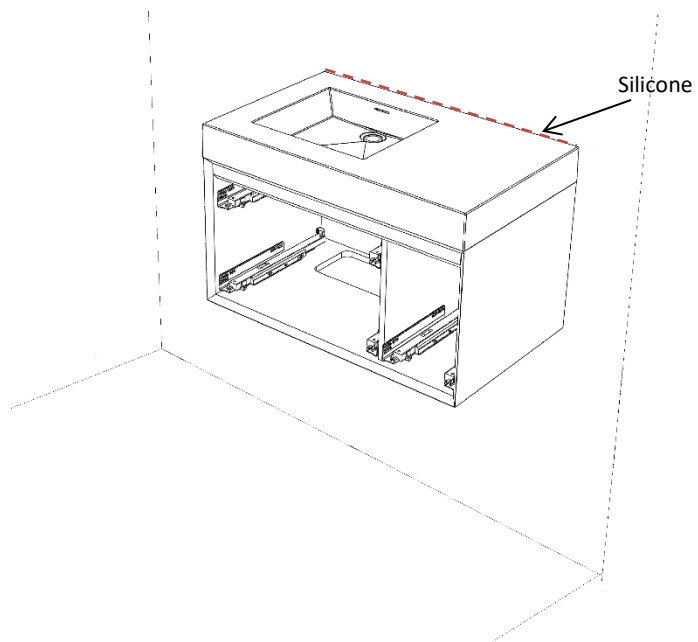
1. Before installing the lavatory on the vanity, apply a General All Purpose Silicone Sealant on the surface of the vanity that will support the lavatory.



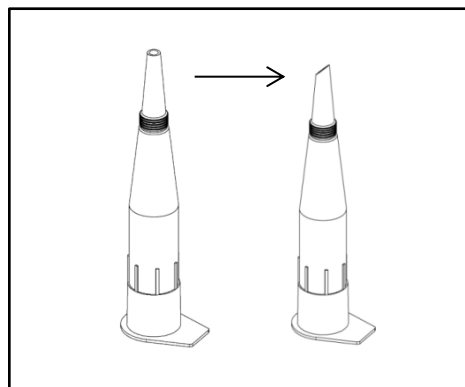
2. Place the lavatory on the vanity and press down to make sure there is good adhesion between the 2 surfaces.
3. Connect all the final plumbing. Hook up the water to the valve.



4. Apply a line of silicone between the sink and the wall.

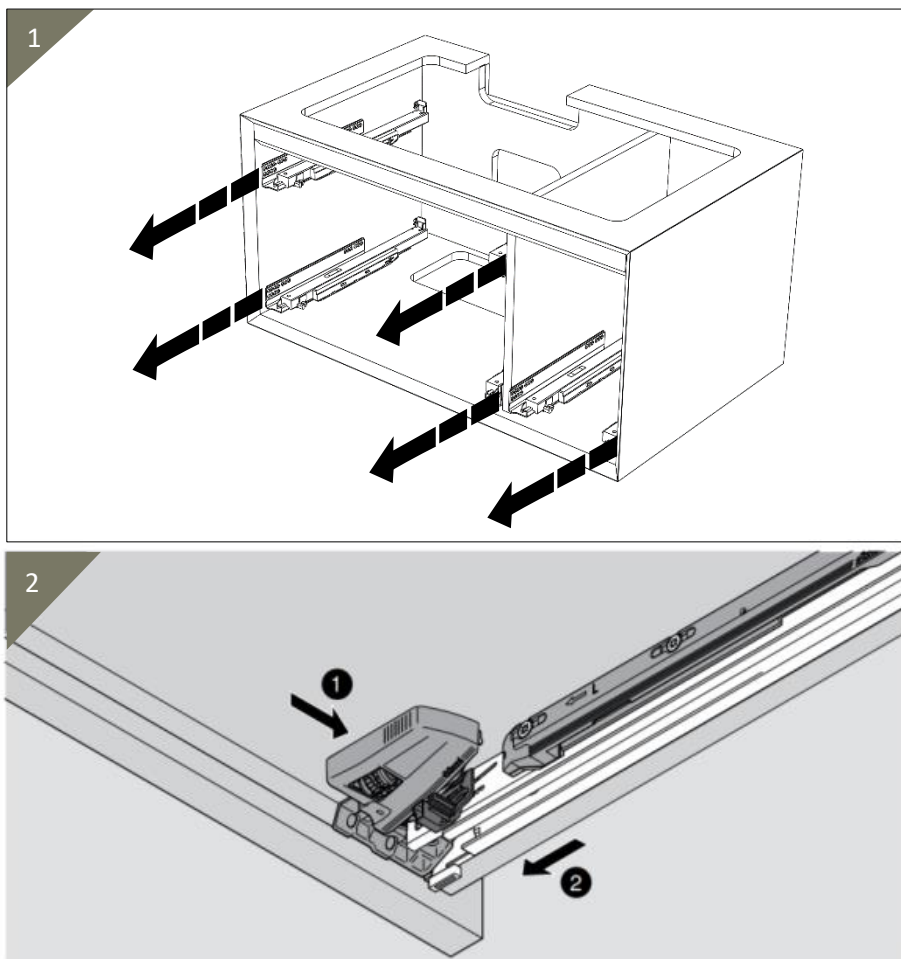


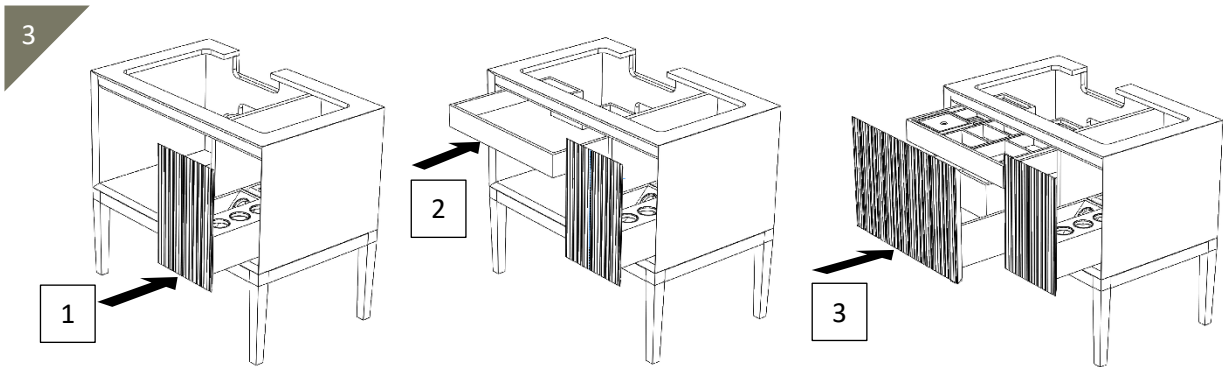
Cut the nozzle at 45 degrees for a better application of the silicone



DRAWER ADJUSTMENTS

1. Clean the slides and make sure there is no dust that could interfere with the BLUM slow-closing system.
2. Pull the drawer slides out to full extension. Refer to image #1.
3. Align the drawer onto the drawer slides.
4. Firmly hold the drawer open with one hand so that it remains fully extended.
5. Slide each clip tab toward the front of the drawer until it clicks into place. Image #2.
6. Close the drawer.





Drawer adjustments

Front side-to-side adj



Rotate side-to-side adjustment left or right equally on both locking devices. Drawer front moves in the same direction as rotation.

Rear side-to-side adj



Rotate the rear side-to-side adjustment left or right to re-align the back of the drawer box with the front.

Front height adj



To raise front - Press up on adjustment tab and push toward back of drawer.

Rear tilt adj



To raise drawer back/tilt front - Rotate gray tilt adjustment lever on the rear of each runner.

CLEANING GUIDE

WETSTYLE Furniture is ultra-easy to clean: after each use, simply wipe with a soft cloth to remove any surface dirt. Do not leave water standing on the surface.

For standard cleaning, we recommend using warm water with vinegar. Do not use abrasive products or cream cleaners.

Never use petroleum-based products when cleaning, i.e. paint thinners or other solvents, as they may damage the wood surface.

WARRANTY

The warranty on WETSTYLE products covers all defects in materials and manufacturing for a period of one year from the date on which the owner originally purchased the product directly from WETSTYLE or from an authorized retailer. This warranty is valid for the original owner only. This warranty does not apply to cases in which a product was incorrectly installed, or to damage due to negligence, misuse, cigarettes, flames, natural disasters or other accidents.

WETSTYLE is not responsible for any fees or recovery charges that may have been generated by the purchase of a product that is not adequate for an existing building structure.

At the discretion of the manufacturer, the guarantee is limited to the repair or replacement (of a product of equal or greater value) at the condition that the claim is made during the guarantee period to an authorized dealer or directly to WETSTYLE. The handling fees and all other charges related to the product replacement are not covered by the guarantee.

